



# BIRDING ON THE LOWER SHORE



King Rail. Photo by Jonathan Irons



## WELCOME!

The Lower Eastern Shore is one of the best locations in the country (if not the world) for recreational birding. This brochure highlights various public access sites in Somerset, Wicomico, and Worcester County, Maryland that are good for birding.

These locations were selected because they are near to our local communities, are more accessible to those with disabilities, or are not as well-known as they should be. We have highlighted four sites from each of the Lower Shore counties. More locations can be found on our interactive web map.

We hope that you enjoy visiting these community assets, and we invite you to learn more about the Lower Shore Land Trust by following the QR code to our website or going to [LowerShoreLandTrust.org](http://LowerShoreLandTrust.org).



Bobwhite Quail. Photo by Dan Small

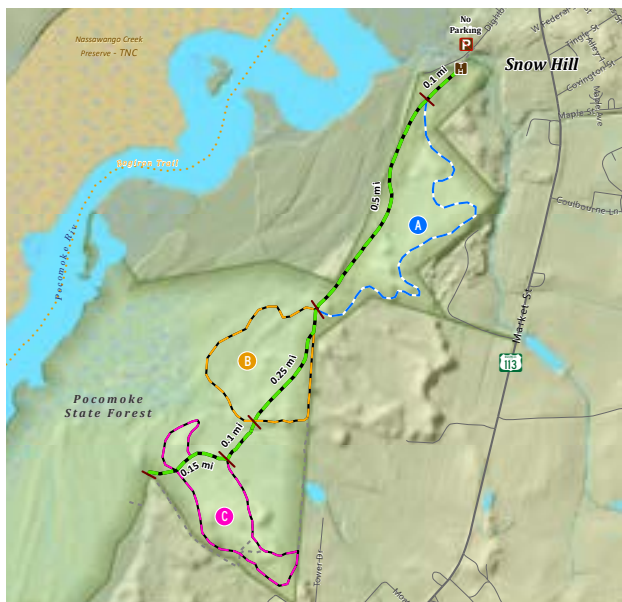
## 1 BAY CLUB/OLD JOSEPH FARM TRACT

9122 Libertytown Rd., Berlin, MD 21811

38.330088864027324, -75.24933570125249

Formerly a 36-hole golf course, the Lower Shore Land Trust worked with the Maryland Department of Natural Resources to purchase the Bay Club property in 2023. It is now managed by the MD Forest Service and is open to recreational uses such as hiking, birdwatching, horseback riding, hunting, and biking.

**BIRDS:** Habitat includes ponds, forested wetlands, creeks and agricultural ditches, shrub/scrub, and mature forest. Waterfowl, Herons, Hawks, Warblers, Vireos, Thrushes, Tanagers, and Sparrows.



Walking Trails at Summerfield

## 2 SUMMERFIELD TRAILS

513 Dighton Ave., Snow Hill, MD 21863  
38.17060200125683, -75.40309211519843

A 3.7-mile set of trails located on the southwest side of Snow Hill. The trailhead is accessible from Dighton Avenue and winds through portions of MD DNR's Pocomoke Forest.

**BIRDS:** On these forested trails you may find both upland and lowland forest species. Warblers, Vireos, Orioles, Sparrows, Tanagers, and resident birds.



## 3 ISLE OF WIGHT WILDLIFE MANAGEMENT AREA

13070 St. Martins Neck Rd., Bishopville, MD 21813  
38.39257199670677, -75.10490297500922

This DNR owned and managed property is located on Maryland's Coastal Bays on the Route 90 entrance to Ocean City. This waterfront site has a boardwalk, a pier, paved trails, and picnic areas.

**BIRDS:** Habitats include the open water of the Coastal Bays, scrubby edges, and forest. Waterfowl, Herons, Grebes, Loons, Warblers, and Sparrows.



## 4 HICKORY POINT CYPRESS SWAMP

542 Hickory Point Rd., Pocomoke City, MD 21851  
38.02346802131188, -75.62201194948446

This site contains over 2,000 acres owned and managed by MD DNR just south of Pocomoke City on the Pocomoke River. The Palamedes Swallowtail is one of over 10 endangered or threatened species that can be found here.

**BIRDS:** There are both dry, upland forests and very wet forested swamps on the property that host a wide variety of species. Warblers, Vireos, Thrushes, Tanagers, and Sparrows.



## 5 TOM TYLER NATURE TRAIL

Old Bradley Rd.  
Mardela Springs, MD 21837  
38.48400477688484,  
-75.78396841065941

The Tom Tyler Nature Trail runs through a section of forest along the Nanticoke River. The forest is dominated by loblolly pine near the road but gives way to oak and some Atlantic White Cedar along the river.



Yellow-throated Warbler  
Photo by Marcia Balestri

**BIRDS:** Herons, Warblers, Thrushes, Vireos, Tanagers, and Sparrows. A good site to find nesting Yellow-throated and Prothonotary Warblers.



Cedar Hill Marina and Park

## 6 CEDAR HILL MARINA AND PARK

Bivalve, MD 21814  
38.31109540427301, -75.88912350305233

Owned and operated by Wicomico County, Cedar Hill has a short nature trail, picnic areas, and views of the Nanticoke River. This is one of several parks that one can visit along the Nanticoke River including Roaring Point and Cove Beach.

**BIRDS:** Waterfowl, Herons, Warblers, Vireos, Thrushes, and Sparrows.





Adkins Mill Park

## 7 ADKINS MILL PARK AND NATURE TRAIL

5166 Powellville Rd., Pittsville, MD 21850  
38.33297153050225, -75.37298444457846

This 33.7-acre park is owned and operated by Wicomico County. It is a well-known fishing location due to Adkins Mill Pond with a pavilion, picnic area, and short nature trail with boardwalk.

**BIRDS:** Waterfowl, Herons, Warblers, Vireos, Tanagers, and Sparrows. This is a good site to find Yellow-Throated and Prothonotary Warblers.



## 8 SALISBURY CITY PARK AND SCHUMAKER POND

South Park Dr., Salisbury, MD 21804  
38.364492021576844, -75.5914710696592

These parks, though separate, are connected along Beaverdam Creek in the City of Salisbury. The typical park setting is interspersed with sections of larger forest and includes the Salisbury City Zoo.

**BIRDS:** Herons, Waterfowl, Warblers (especially in migration), and resident birds.

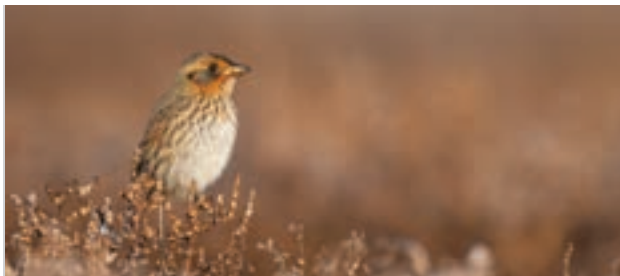


## 9 CRISFIELD PARK PIER

201 Collins St., Crisfield, MD 21817  
37.985004670259784, -75.85509310650554

This park is adjacent to the Crisfield Library and includes a fishing pier, trails, and picnic area. The park provides good views of the water and the low marshes that surround Crisfield.

**BIRDS:** Herons, Waterfowl, Sparrows, and resident birds. This can be a good migrant stop in the fall.



Saltmarsh Sparrow. Photo by Jeremy Irons

## 10 RACCOON POINT REGIONAL PARK

27875 Revells Neck Rd., Westover, MD 21871  
38.14135953391844, -75.78668852562652

This waterfront park is owned and operated by Somerset County. It is a well-loved beach with good views of the Manokin River and an extensive area of tidal marsh.

**BIRDS:** Herons, Waterfowl, Grebes, Loons, Rails, and Sparrows.



## 11 WELLINGTON WILDLIFE MANAGEMENT AREA

32511-33039 Dublin Rd., Princess Anne, MD 21853  
38.158772233624205, -75.61697943734482

This 400+-acre area is managed by Maryland Department of Natural Resources for open habitats such as shallow water wetlands and meadows.

**BIRDS:** Sparrows, Quail, Orioles, and Warblers.

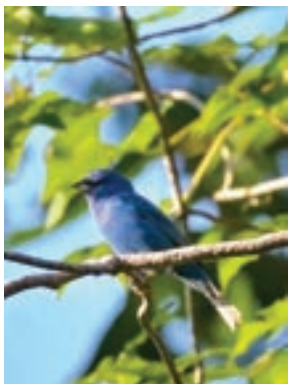


## 12 JANES ISLAND STATE PARK

26280 Alfred J Lawson Dr., Crisfield, MD 21817  
38.01115178076765, -75.84787842339284

This park includes over 2,900 acres of saltmarsh and forests and a very popular water trail. There are many amenities available at the park including fishing and picnic areas.

**BIRDS:** Herons, Waterfowl, Marsh Birds, Warblers, Vireos, and Sparrows.



Indigo Bunting  
Photo by Marcia Balestri

## BIRDING ETHICS

- Never enter private property without permission.
- Keep a safe distance from wildlife to minimize stress and disturbance.
- Limit use of "pishing" and playback, especially in heavily birded areas.
- Stay on designated trails and don't trample vegetation.
- Be courteous; respect other humans and wildlife.
- Follow all local laws, rules, and regulations.

### KEY

BATHROOMS

WHEELCHAIR/  
STROLLER  
ACCESSIBLE

LEASHED PETS OK



PICNIC TABLES



FISHING



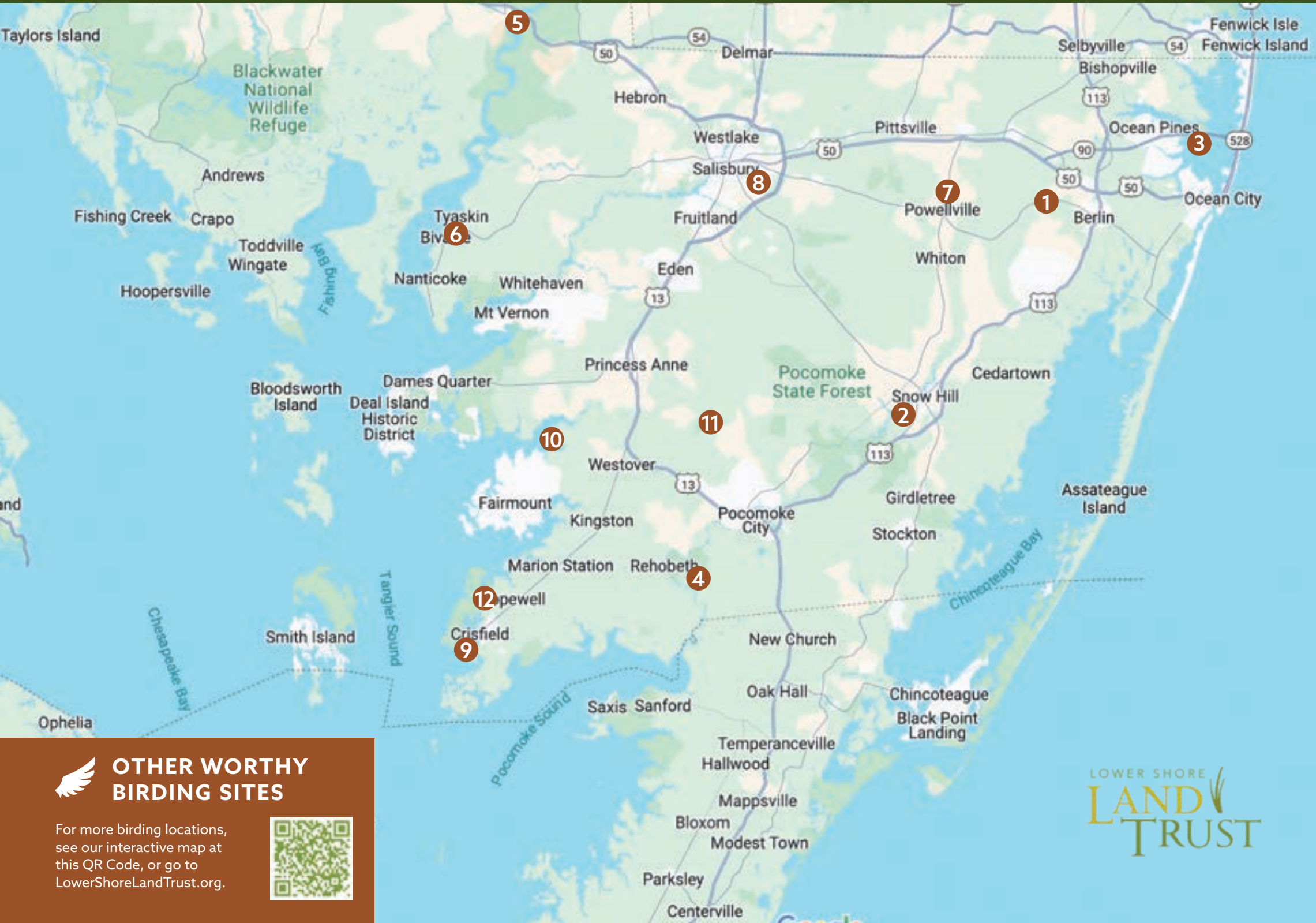
PLAYGROUND

**ALERT:** Be aware that seasonal hunting is allowed at some of these properties.





# LOWER SHORE BIRDING MAP



## OTHER WORTHY BIRDING SITES

For more birding locations, see our interactive map at this QR Code, or go to [LowerShoreLandTrust.org](http://LowerShoreLandTrust.org).

